


SUGGESTOPEDIA





Suggestopedia – Developed by the
Bulgarian psychiatrist and
educator
Georgi Lozanov

Suggestopedia

OR

Desuggestopedia



Introduction

- ❖ Also known as Desuggestopedia
- ❖ Developed by Georgi Lozanov
- ❖ Psychological barriers



The most important characteristics of this method are:

- ❖ Decoration
- ❖ Furniture
- ❖ Arrangement of the classroom
- ❖ Authoritative behavior of the teacher
- ❖ The use of soft Baroque music (this makes the method unique)



Three functions of music in therapy : (Gaston, 1968)

- ❖ To facilitate establishment and maintenance of personal relations
- ❖ To bring about increased self-esteem through increased self-satisfaction in musical performance
- ❖ To use the unique potential of rhythm to energize and bring order (the reason for the use of music in Suggestopedia)

Approach

- ❖ Theory of language is not articulated by Lozanov.
- ❖ Theory of learning underlies Suggestology. So that;
Students => Suggestible
Fears => Desuggestible

Approach

Bancroft states that there are six principle theoretical components of Suggestopedia:

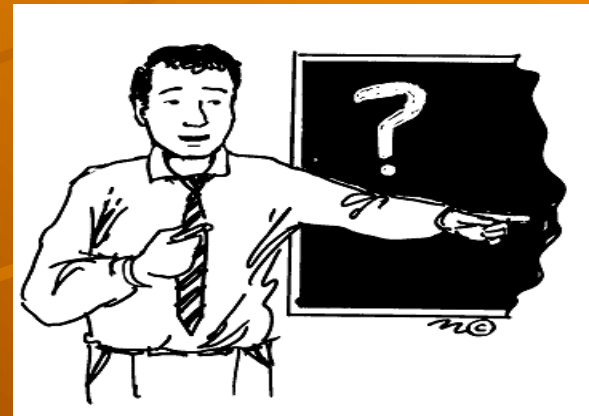
- ❖ Authority
- ❖ Infantilization
- ❖ Double-planedness
- ❖ Intonation, rhythm, and concert pseudo-passiveness

Authority

- ❖ give control and authority to the teacher completely

What makes a teacher authoritative?

- ❖ self-confidence
- ❖ Personal distance
- ❖ Acting ability
- ❖ Possitive attitude



Infantilization

teacher – student relationship
vs.

parent – child relationship

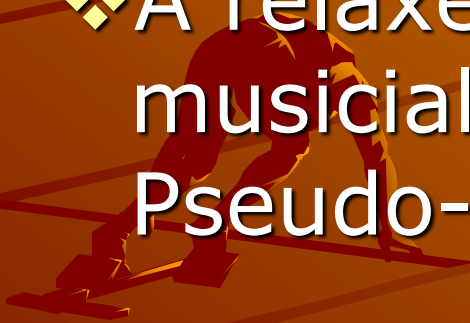


Double-plannedness

- ❖ Learner learns not only from
 - direct instructionbut also
 - bright decor of the classroom, musical background, shape of the classroom, personality of the teacher.

Intonation, Rhythm, Concert Pseudo-Passiveness

- ❖ Intonation plus Rhythm coordinated with musical background
- ❖ A relaxed attitude with the help of musical background : Concert Pseudo-Passiveness



Design

Objectives

- ❖ To deliver advanced conversational competence quickly
- ❖ To master prodigious lists of vocabulary



Design

Syllabus

- ❖ It lasts 30 days, 10 units of study.
- ❖ 4 hours a day, 6 days a week



Design

Learning Activities

- ❖ Question and answer

- ❖ Role play

- ❖ Listening exercises



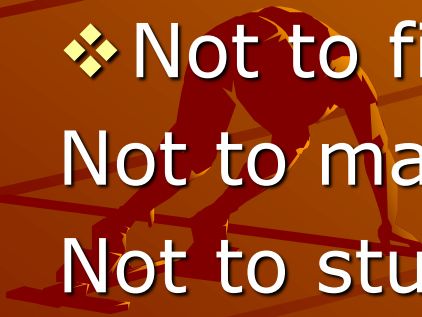
Design

Roles of Learners

- ❖ Pseudo-passiveness state
- ❖ Acting childishly
- ❖ Not to figure out

Not to manipulate

Not to study material



Design

Roles of teachers



According to Lozanov, teachers should give attention to

- ❖ Absolute confidence
- ❖ His/her manners and dress
- ❖ Organizing the lesson (music choice, punctuality)
- ❖ Responding tactfully
- ❖ Modest enthusiasm

Design

Role of Materials

-Direct Supported Materials:

- ❖ Texts

- ❖ Tape

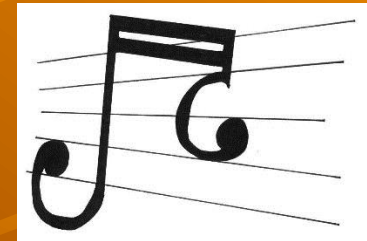
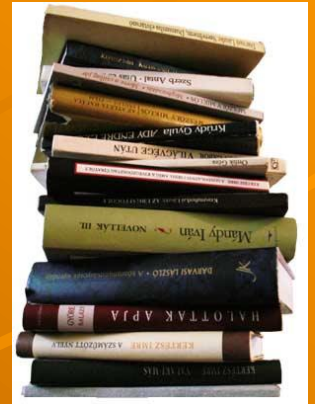
-Indirect Supported Materials:

- ❖ Classroom fixtures

- ❖ Music

- ❖ Text books

- ❖ Learning environment

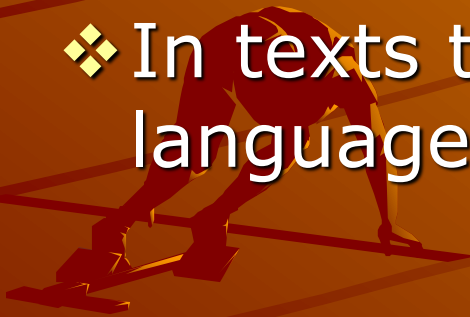


Procedure

- ❖ A 4-hour language class has three parts:
 - ❖ Oral view section
 - ❖ micro studies
 - ❖ macro studies
 - ❖ A new material presentation and discussion
 - ❖ Concert session

Conclusion

- ❖ Learning is facilitated by environment and music.
- ❖ Teacher is the authority.
- ❖ Psychological barriers are removed.
- ❖ In texts target language and its native language are given.



Advantages of Suggestopedia

❖ Motivation and self-confidence

❖ Less stressed



Disadvantages of Suggestopedia

- ❖ Hardness of finding colorful environment
- ❖ Negative effects of direct translation
- ❖ Concentration problems



THANKS FOR
YOUR
ATTENTION...

